



Kingston and Richmond Safeguarding Children Partnership

Published Arrangements 2024

December 2024

**Revised in accordance with statutory guidance
Working Together to Safeguard Children 2023**





Local Safeguarding Arrangements

This paper sets out the revised local safeguarding arrangements as determined by the statutory safeguarding partners in accordance with the revised statutory guidance in Working Together to Safeguard Children 2023.

Kingston and Richmond Safeguarding Children Partnership (KRSCP) arrangements are signed off through the appropriate governance process for Kingston Council, Richmond Council, the South West London Integrated Care Board, and the Metropolitan Police Service.



1. Aims and Objectives

1.1 Nothing is more important than protecting children from abuse, neglect and exploitation. Children who need help and protection deserve high quality and effective support as soon as a need is identified.

1.2 We want a system that responds to the needs and interests of children and families. In such a system, practitioners will be clear about what is required of them individually, and how they need to work together in partnership with others.

1.3 Securing the best possible safeguarding outcomes for children is a priority for all partner organisations in Kingston and Richmond. The right structures need to be in place for strategic leaders to have a clear understanding of strengths and weaknesses of current safeguarding arrangements, to make the right, timely decisions and for operational activity to take place where it matters most to make a positive impact on young lives.

The purpose of these local arrangements is to support and enable local organisations and agencies to work together in a system where:

- Children are safeguarded and their welfare promoted.
- Partner organisations and agencies collaborate, share and co-own the vision for how to achieve improved outcomes for vulnerable children.
- Organisations and agencies challenge appropriately and hold one another to account effectively.
- There is early identification and analysis of new safeguarding issues and emerging threats.
- Learning is promoted and embedded in a way that local services for children and families can become more reflective and implement changes to practice.
- Information is shared effectively to facilitate a more accurate and timely decision making for children and families.



2. Background

2.1 [Working Together to Safeguard Children 2023](#) states that the responsibility for local partnerships rests with the three statutory safeguarding partners – the local authority, police, and the Integrated Care Boards (ICBs). The lead representative from each (local authority chief executive, integrated care board accountable officer, and chief of police) must play an active role. They can delegate their functions if felt appropriate.

2.2 The partners should agree how to coordinate their services, act as a strategic leadership group for others, and implement local and national learning from serious child safeguarding incidents.

2.3 Working Together to Safeguard Children 2023 sets out the requirement for partnerships to:

- Identify lead safeguarding partners (LSPs). The LSP is the head of each statutory safeguarding partner agency. The LSP is responsible for holding their own organisation or agency to account, speaking and making decisions on behalf of their agency, and meeting the statutory and legislative duties of their agency.
- Identify delegated safeguarding partners (DSPs): This action involves identifying and appointing DSPs within the partnership to oversee the implementation of safeguarding practices across different sectors, ensuring consistency and accountability.

2.4 There is a national Child Safeguarding Practice Review Panel which commissions national reviews in respect of children's safeguarding and will liaise with local safeguarding partners over local child safeguarding practice reviews.

2.5 Since 3 September 2018, education providers have been required to follow revised statutory safeguarding guidance from the Department for Education. [Keeping Children Safe in Education: for Schools and Colleges](#) – last updated 2024. This is to be read in conjunction with Working Together to Safeguard Children. This guidance emphasises supporting care leavers, previously looked after children,



children with special educational needs and disabilities (SEND) and has a particular focus on child-on-child abuse.

2.6 Schools and colleges are responsible for their own child protection policies which reflect the children they serve and local needs, and the additional safeguarding challenges for children with SEND. Schools and colleges should now also be aware of contextual safeguarding.

3. Voice of the Child

3.1 The arrangements will ensure that the voices of children and young people are at the forefront of partners' consideration of what is working well and what needs to improve. The statutory safeguarding partners are committed to ensuring that the voice of the child is heard on all issues pertaining to the partnership and will inform their deliberations. There will be opportunities for feedback from local user groups in relation to issues they have considered.

4. Local Safeguarding Arrangements: Governance and Structure

4.1 The responsibility for driving forwards the local safeguarding arrangements is devolved to the Director of Children's Services for Kingston & Richmond Councils, NHS South West London ICB's Director of Quality, and the Detective Superintendent for the Metropolitan Police Service's South West Basic Command Unit (MPS SW BCU). The partnership signs up to the London Safeguarding Children Procedures Information Sharing Guidance which can be found [here](#).



The following characteristics are considered key to KRSCP's arrangements:

- To have a child centered approach.
- To have a positive and direct impact on frontline services, across all partners.
- A set of agreed aims reflected through the business plan.
- A clear focus upon children's safeguarding and join-up with other partnership governance arrangements which take responsibility for wider issues of children's welfare and development.
- Effective working through clear governance and accountability.
- To have strong, independent scrutiny and challenge, and a shared culture of constructive challenge.
- To create quality relationships across partners with a shared set of values and behaviours.
- To have an effective policy for resolving professional differences.
- That there is equity between partners.
- To include the voice of the children in its direction and services.

4.2 Accountability meetings will be held by each statutory partner to ensure that their respective leaders are both fully briefed upon the effectiveness of safeguarding arrangements and able to hold the devolved leads to account. This will include the leader, lead member, and chief executive of each local authority; the chair and chief accountable officer for the ICB; and the police borough commander for South West London. It is proposed that there will be regular meetings with LSPs and consideration of where it is beneficial to meet on a regional basis.

4.3 The statutory partners will also ensure that their annual report will be shared with the relevant local authority and ICB committees/boards, including the Health & Wellbeing Boards.

4.4 The geographical footprint of safeguarding arrangements will remain the local authorities of Kingston upon Thames and Richmond upon Thames. It is important to be mindful of the geographies in which the partner organisations are working within. Specifically, that the MPS South West BCU covers additionally Merton and



Wandsworth; and that the ICB covers additionally Croydon, Merton, Sutton and Wandsworth.

KRSCP Executive Groups

4.5 Senior strategic leadership will most effectively be provided by a small Operational Safeguarding Executive Group (OSEG), with membership of the Delegated Safeguarding Partners as follows:

Statutory Safeguarding Partners:

- Director of Children's Services, Kingston & Richmond local authorities
- Director of Quality, NHS South West London ICB
- Detective Superintendent, South West BCU, Metropolitan Police Service

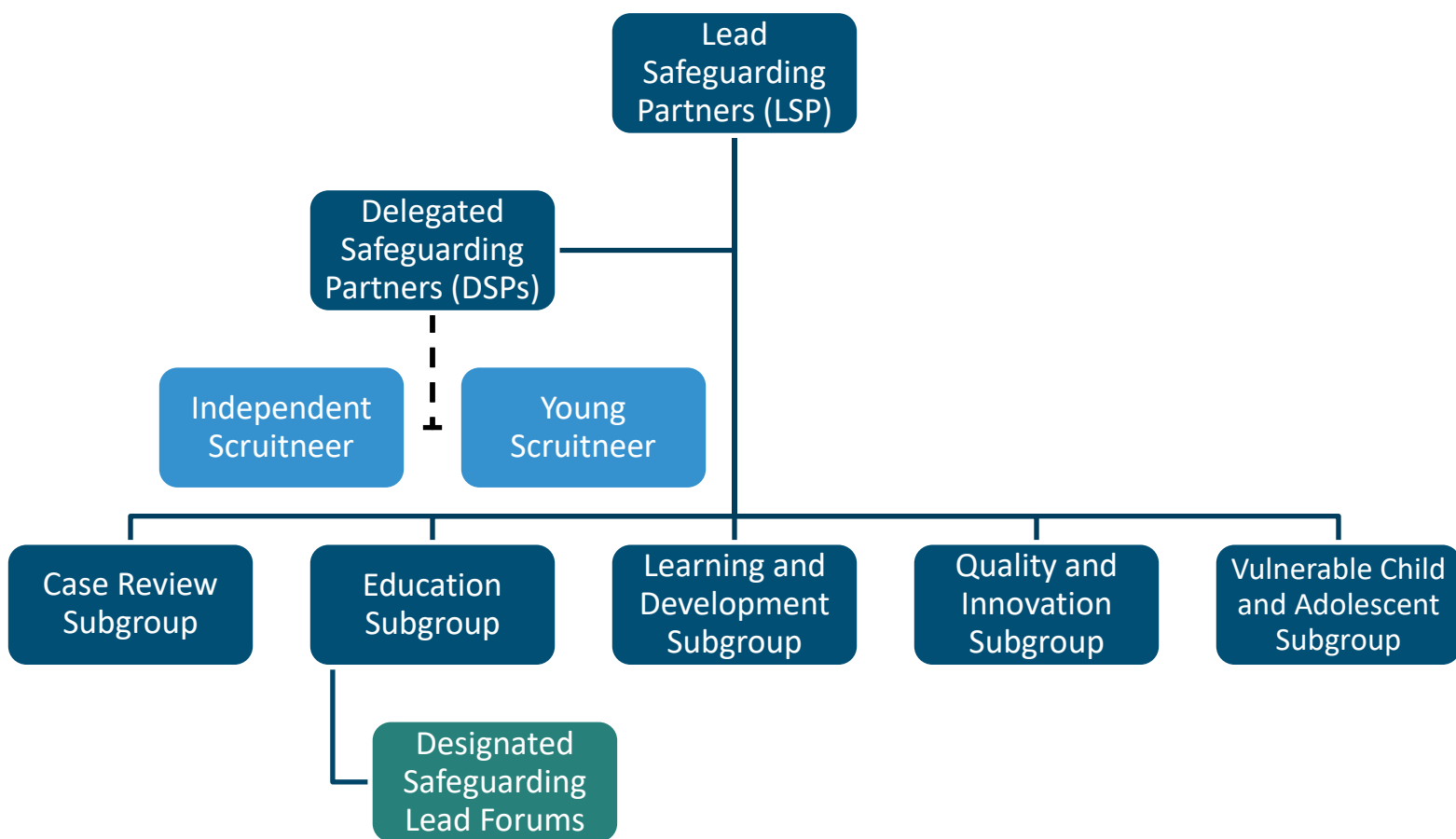
A Wider Safeguarding Executive Group (WSEG) will include advisory standing members including:

- Designated Doctor for Safeguarding Children
- Designated Nurse for Safeguarding Children
- Subgroup Chairs
- Independent Scrutineer

Please see **Appendix 1** for further detail on terminology and governance.

Structure:

LSP for Richmond = Brian Reilly, Chief Executive, London Borough of Richmond	DSP: Ian Dodds
LSP for Kingston = Sarah Ireland, Chief Executive, Royal Borough of Kingston	DSP: Ian Dodds
LSP for the Police = Louisa Rolfe, Assistant Commissioner	DSP: Clair Kelland
LSP for ICB= Elaine Clancy, Chief Nurse Officer	DSP: Fergus Keegan





The Operational Safeguarding Executive Group (OSEG) and Wider Safeguarding Executive Group (WSEG)

- Ensuring effective quality assurance activity provides a clear understanding of safeguarding delivery, based on the three core elements of performance data, audit findings, and children & families' feedback.
- Developing & overseeing the overarching strategic aims of KRSCP.
- Setting safeguarding priorities for the partnership and overseeing the delivery of a business plan.
- Financial planning and resourcing of the arrangements.
- Oversight of safeguarding work completed by local partners through their operational responsibilities.
- Consider opportunities for working in collaboration with other geographical areas to improve performance and efficiency.
- Manage linkages to other strategic boards to encourage joint working, sharing of learning, and holistic approach to safeguarding (including Safeguarding Adults Boards, Community Safety Partnerships, Health and Wellbeing Boards, and the Local Family Justice Board).
- Ensure effective partnership working in relation to operational multi-agency arrangements (including MASH, MAPPA, MARAC, PRE-MACE, Channel Panel).
- Agreeing an annual report for publication.

4.6 Subgroup chairs will be expected to report on a routine basis to the OSEG. Other officers and partners will routinely be invited to attend the WSEG to contribute to specific discussions on the business plan, including those from voluntary organisations and those representing the views of children and young people. The independent scrutineer (see below) will routinely be invited to attend and contribute to the WSEG.

4.7 The OSEG will be chaired by one of the DSPs on a rotating basis. To ensure continuity, the chair's role should be held for a minimum period of twelve months, and



there will be an annual review to determine who should chair the OSEG for the following year.

4.8 The OSEG will be supported in delivering its objectives by the KRSCP team hosted by Richmond Council.

4.9 The WSEG will meet quarterly to ensure the partnership is delivering on its strategic aims in Kingston and Richmond.

4.10 The WSEG will ensure effective liaison with safeguarding partners outside the boroughs to address the challenges of mobile families, children accessing services outside the borough boundaries, and specific safeguarding issues such as county lines.

4.11 The relevant agencies for these multi-agency safeguarding arrangements will be as follows:

Kingston Council: <ul style="list-style-type: none">• Public Health• Adult Services• Housing• Community Safety	Richmond Council: <ul style="list-style-type: none">• Public Health• Adult Services• Housing• Community Safety	Achieving for Children
South West London ICB	Metropolitan Police Service	Kingston and Richmond NHS Foundation Trust
Early Years Providers	Your Healthcare CIC	Central London Community Healthcare NHS Trust
Schools including primary/secondary/special & independent & colleges	SW London & St Georges Mental Health Trust	West Middlesex University Hospital (Chelsea & Westminster NHS Trust)



Probation Service	London Ambulance Service	Each private health provider
For each health provider, the named safeguarding professionals	Voluntary Sector providers for children	Faith Sector
Fire and Rescue Service	CAFCASS	Sports Sector
Childrens Home providers	Clearsprings (Asylum Hotel provision)	

4.12 The core responsibilities required of each relevant agency will be as follows:

- To provide evidence as required by the statutory partners through relevant quality assurance activity that addresses these core questions:
 - What are they doing to safeguard children?
 - How well they are safeguarding children?
 - What difference their service has made for children?
 - Whether they can identify any weaknesses in the local safeguarding system?

Engaging Partners

4.13 It is an absolute priority for the statutory partners that there is effective engagement of all relevant agencies, both in responding to the priorities that are agreed by the OSEG, but also in being able to raise issues of concern or of best practice.

4.14 New arrangements will ensure that this engagement is achieved through a combination of methods:

- Learning and partnership events.
- Membership of subgroups and task and finish groups.
- Attendance at the WSEG meetings.
- Direct lines of contact with members of the OSEG.
- Proactive engagement with key existing partnership groups and forums.



4.15 Partner engagement will be centered upon themed learning/partnership events. These events will be focused on key safeguarding issues and/or emerging themes. These meetings will afford opportunities to disseminate learning to a wider safeguarding community, learn from each other, and support statutory and non-statutory agencies in their safeguarding provision. The themes and issues for inclusion will be agreed by the OSEG and the events will be organised by the partnership team. The frequency of these meetings will be kept under review.

4.16 The ICB will lead and support all activities necessary to ensure that organisations within the health community meet their responsibilities to safeguard and protect children and young people. With the engagement of the designated medical and nursing staff, the ICB provide advice and support all named professionals across the health community. The existing NHS contractual arrangements for quality assurance and oversight will remain in place through the safeguarding arrangements.

4.17 To ensure effective engagement with key partners, there will also be proactive communication pathways and regular engagement with existing groups.

Subgroups

4.18 The OSEG will have oversight of chairing arrangements, terms of reference and membership of each subgroup. Other issues may require task & finish groups as required by the OSEG/relevant subgroups.

- Case Review Subgroup: Further information about this subgroup can be found [here](#).
- Education Subgroup: Further information about this subgroup can be found [here](#).
- Learning & Development Subgroup: Further information about this subgroup can be found [here](#).
- Quality and Innovation Subgroup: Further information about this subgroup can be found [here](#).



- Vulnerable Child & Adolescent Subgroup: Further information about this subgroup can be found [here](#).

Other Relevant Matters

4.24 Notifications of serious child safeguarding cases to the Child Safeguarding Practice Review Panel are the responsibility of the local authority. The local authority must inform the statutory safeguarding partners and partnership team of any notification within five working days, and they will then determine if there is a need for the case review subgroup to convene a rapid review.

4.25 The primary procedures used will remain the Pan-London Child Protection Procedures, developed and maintained by the London Safeguarding Children Partnership. Work on any additional policy and procedures required locally, will be taken on by the partnership team, with review and agreement sought from relevant partners on an ad hoc basis. There will be some scope also to work on local policies and procedures with other safeguarding partnerships in SW London when appropriate.

4.26 The partnership works to the local threshold document which aligns to the London Threshold Document. Please see [KRSCP's threshold webpage](#) for further details of local mapping.

Child Death Review

4.27 The local authority and ICB are the statutory child death review partners, and this responsibility is separate to the responsibilities of the safeguarding children partnership and has additional statutory guidance. The child death overview panel is now coordinated at a South West London level. Locally, support to child death review processes in Kingston and Richmond is undertaken by the partnership coordinator along with colleagues in relevant organisations.



It is recognised that the partnership's safeguarding arrangements must include strong ties between CDR/CDOP and the Case Review subgroup to ensure appropriate sharing of information and learning.

5. Independent Scrutiny

5.1 Independent scrutiny is a statutory requirement to provide assurance in judging the effectiveness of multi-agency arrangements to safeguard and promote the welfare of all children in a local area. The OSEG will ensure recruitment of an independent scrutineer and young scrutineer who will work together to provide the critical challenge and appraisal of the safeguarding arrangements agreed in Kingston & Richmond.

5.2 The role of independent scrutiny is required to cover the following:

- Consider the overall effectiveness of local safeguarding arrangements.
- Consider how well the safeguarding partners are providing strong leadership.
- Provide independent scrutiny of the annual report of the safeguarding partners and progress against the identified areas of priority.

5.3 The other ways in which independent scrutiny will be delivered by triangulating with other key stakeholders such as: democratic local scrutiny, peer review, Association of London Directors of Children's Services (ALDCS) supported by the Department of Education etc.

6. Conflict Resolution

6.1 All agencies working with children in Kingston and Richmond remain subject to the London Child Protection Procedure on 'Resolving Professional Differences'. This sets out the general principles of resolution as well as the specific processes to be followed. The statutory safeguarding partners and all relevant agencies will be expected to



adhere to these procedures. A local companion pathway has been developed to support navigation of this process and can be accessed [on KRSCP's Resolving Professional Differences webpage](#).

6.2 When a disagreement arises between members of the OSEG then the general principles of resolution will still apply:

- When the disagreement is between two agencies, then they should seek to meet and find a satisfactory resolution.
- Where the disagreement cannot be resolved, or involves a more complex set of partner agencies, then it will be for the WSEG to seek a resolution.
- Where necessary, the three statutory safeguarding partners have primacy in determining the resolution to a disagreement.
- Where there is disagreement between the statutory safeguarding partners, then the independent scrutineer should be asked to mediate and negotiate a satisfactory solution.
- Where necessary, the statutory safeguarding partners may escalate to the chief executive of the local authority, the chief accountable officer of the ICB and the MPS commander for South West London.
- Statutory partners should escalate to the relevant Secretary of State only as a final resort.
- Whistleblowing procedures provide an additional important route for staff to raise concerns in a safe process that protects their position if this is a concern. Partners will each adhere to their own whistleblowing procedures.

7. Funding & Resources

7.1 The budget and resourcing needed to ensure effective delivery of the local safeguarding arrangements will be determined by the detail of the work to be undertaken to deliver the objectives and priorities set by the OSEG. Operational safeguarding duties will remain the responsibility of each statutory partner and relevant agency and will not be the responsibility of the partnership team.



8. Priorities

8.1 KRSCP priorities will be agreed every two years. See our current priorities [here](#).

9. Annual Review

9.1 To inform children, families, and practitioners about the activity undertaken, the partnership will publish an annual report. The report will consider the effectiveness of the local arrangements and report on any proposed changes and when they will be implemented.



Appendix 1

LEAD SAFEGUARDING PARTNER (LSP)

*ESTABLISHED AS PER
WORKING TOGETHER 2023
AND REFERRED TO AS LSP*

Function: Responsibility for local multi agency Safeguarding arrangements

Function: Decision making re financial contribution of partners

Engagement: Annual engagement meeting with regular updates from DSPs

OPERATIONAL SAFEGUARDING EXECUTIVE GROUP(OSEG)

*DELEGATED SAFEGUARDING
PARTNER (PREVIOUSLY
KNOWN AS OPERATIONAL SLG)*

Function: Oversight of the quality and compliance of the delivery of agreed shared priorities.

Function: Operational decision making for KRSCP

Function: Rotating annual chair of KRSCP

Function: Sign off & dissemination of learning from policies/reviews/reports

Engagement: Fortnightly meetings with KRSCP Manager

Engagement: Quarterly Meetings with Wider Executive group

WIDER SAFEGUARDING EXECUTIVE GROUP (WSEG)

*SENIOR MANAGERS
REPRESENTING PARTNER
AGENCIES (PREVIOUSLY KNOWN
AS WIDER SLG)*

Function: Attendance at quarterly meetings

Function: Chairing of subgroups

Function: Leading on and contributing to policy development, Rapid Reviews/LCSPRs & Dissemination of Learning

Engagement: Quarterly partnership meetings & subgroup attendance

RELEVANT AGENCIES

*THOSE AGENCIES WHOSE
INVOLVEMENT THE
SAFEGUARDING PARTNERS
CONSIDER ARE REQUIRED TO
SAFEGUARD AND PROMOTE
THE WELFARE OF LOCAL
CHILDREN.*

Function: A clear understanding of its responsibilities in relation to safeguarding children locally, and how it will discharge them

Engagement: Annual engagement meeting with KRSCP operational and wider executive